

Development of SSR markers in mung bean, *Vigna radiata* (L.) Wilczek using *in silico* methods

N. SINGH, ¹H. SINGH, ²P. NAGARAJAN

Department of Biotechnology, Instrumentation and Environmental Science

¹Department of Agril. Biochemistry, Bidhan Chandra Krishi Viswavidyalaya, Mohanpur, West Bengal

²Department of Plant Molecular Biology and Bioinformatics, TNAU, Coimbatore, Tamil Nadu

Received: 04-1-2013, Revised: 25-3-2013, Accepted: 30-3-2013

ABSTRACT

Nucleotide sequences available in public database provide a cost effective and valuable source for the development of molecular markers. In this study, the nucleotide sequence database available in National Centre for Biotechnology Information (NCBI) is utilized to identify and develop SSR markers in mungbean (*Vigna radiata*). A total of 803 genomic sequences, 829 EST sequences and 82 GSS sequences were downloaded from NCBI. Eight hundred and forty two SSRs from genomic sequences, 240 SSRs from EST sequences and 60 SSRs from GSS sequences were obtained using SSRIT tool. Primers pairs were successfully designed for 109 SSR motifs from genomic sequence, 110 SSR motifs from EST sequence and 25 SSR motifs from GSS sequences using Primer3 (<http://frodo.wi.mit.edu>) software. Fifteen SSR primers were finally characterized and validated in 24 mungbean and six urd bean accessions.

Keywords: EST, GSS, NCBI, SSR MARKER, SSRIT

Mungbean (*Vigna radiata* L. Wilczek) is an important pulse crop in developing countries of Asia, Africa and Latin America, where it is consumed as dry seeds, fresh green pods (Karuppanapandian *et al.*, 2006). Mungbean serves as vital source of vegetable protein (19.1-28.3%), mineral (0.18-0.21%) and vitamins. It is native of India-Burma and is cultivated extensively in Asia (Khattak *et al.*, 2007). India is the leading mungbean cultivator, covers up to 55% of the total world acreage and 45% of total production (Rishi, 2009). Molecular markers are indispensable for genomic study. Among various marker systems such as Restriction Fragment Length Polymorphism (RFLP), Random Amplified Polymorphic DNA (RAPD), Sequence Tagged Sites (STSs) and Amplified Fragment Length Polymorphism (AFLP), Simple Sequence Repeats (SSRs) have occupied a pivotal place because of their reproducibility, multiallelic nature, codominant inheritance, relative abundance and good genetic coverage. SSRs are clusters of short tandem repeated nucleotide bases distributed throughout the genome. Major features that made SSRs very popular are their abundant distribution in the genomes examined to date and their hyper variable nature (Toth *et al.*, 2000). Production of SSR markers can be achieved by methods such as database searching, cross-species amplification, screening genomic libraries and screening of RAPD amplicons. The traditional method of SSR marker development involves construction of SSR-enriched library, cloning and sequencing, which is costly and labour intensive (Kalia *et al.*, 2011).

With this background of knowledge, the present investigation was taken up with the aim to design primers for SSR markers isolated from *Vigna radiata* genomic, EST and GSS sequences using *in silico* techniques.

While a AT too low might possibly lead to

MATERIALS AND METHODS

Experiment was conducted in laboratory of Centre of Plant Molecular Biology (CPMB), Tamil Nadu Agricultural University (TNAU), Coimbatore.

Retrieval of nucleotide sequences from NCBI database

Nucleotide sequences of *Vigna radiata* variety *radiata* are freely available at NCBI website (<http://www.ncbi.nlm.nih.gov>). All genomic, EST and Genomic Survey Sequences of *Vigna radiata* available at NCBI database were obtained.

SSR mining with SSRIT tool

This tool finds all perfect possible SSR present in sequence submitted. Sequences obtained from the NCBI database were submitted in this software. Maximum repeat motif was given heptameric repeat and minimum repeat motif was given two.

Primer designing using PRIMER3 software

SSR primers were designed using primer 3 (<http://frodo.wi.mit.edu>) software. Parameters selected were GC content from 45 to 60 %, SSR repeats were marked as target region, product size ranges from 300 to 500bp, primer length from 18 to 25 nucleotides and melting temperature of (50 to 65)⁰C. A general rule followed by most primer design programs is to bracket the G/C content of primers to between 40- 50 %. A G-C pairing involves three hydrogen bonds versus two for an A-T pair, where an optimal balance of GC content enables stable specific binding, yet efficient melting at the same time. The primer melting temperature is a straightforward estimation of a DNA-DNA hybrid stability and critical in determining the annealing temperature. AT too high will result in insufficient primer template hybridization and therefore, low PCR product yield. non-specific products caused by a higher number of

base pair mis matches, where mismatch tolerance has been found to have the strongest influence on PCR specificity. Short 8-12mer oligo nucleotides, which have multiple annealing sites, are used in a Greedy algorithm to minimize the total number of primers needed for applications, where all the target sequences are known (Mann *et al.*, 2009).

Fast PCR analysis

FastPCR is freeware software. Primers designed were analysed in this software. To analyze pre designed primers click on the Primer Test option given in the software. Paste or type the primer or primers sequence (s) at any TAB Editors. The programme will immediately show primer characteristics its length in bases, melting temperature, CG% content, molecular weight, the extinction coefficient (e260), nmol per one OD, the mass - µg per one OD, linguistic complexity (%) and primer quality. If the primer is self-complementary, the program will show a picture of where this self-complementarity happens. A self-priming ability will also be detected and shown by the program (Kalendar *et al.*, 2011)

PCR amplification of mungbean and urdbean accessions

SSR Primers designed using *in silico* methods were checked on mungbean and urdbean accessions. Mungbean and urdbean accessions were obtained from Department of Pulse at Tamil Nadu Agricultural University Coimbatore. Twenty four mungbean and six urdbean accessions were sown in pots and genomic DNA isolated from 15 days old mungbean and urdbean seedling following the modified protocol of Karupandiyan *et al.* (2006). The quality and quantity of DNA checked by agarose gel electrophoresis and nanodrop spectrophotometer. The final concentration to do PCR was adjusted to 25ng µl⁻¹. PCR was taken as confirmatory tool to check it. About 50 to 100ng of DNA were used as a template. The reaction was carried in a total reaction volume of 15µl containing DNA 25 ng µL⁻¹, 10X assay buffer, Primer (10µM), dNTPs (2.5 mM) (Bangalore Genei Ltd., India), Taq polymerase (3 units µL⁻¹) (Bangalore Genei Ltd., India) and Sterile distilled H₂O. The amplification was carried out in an Eppendorf master cycler. Agarose gel (3%) electrophoresis was performed to separate the amplified products.

RESULTS AND DISCUSSION

The present study was focused on the development of SSR markers specific for mungbean genotype. All genomic, EST and GSS sequences were obtained from NCBI database. It was found that there were 803 genomic sequences, 829 EST sequences and 82 GSS sequences present in *Vigna radiata* genome.

All genomic, EST and GSS sequences were submitted in SSRIT tool. SSRIT tool scrutinizes all SSR presents in submitted sequences. Maximum motif length was given heptamers and minimum number of repeat was given two. Hence, this tool searched all di-nucleotide to hepta-nucleotide repeats which was at least two times repeated in a submitted sequence. SSRs which were more than or equal to ten nucleotides in length were selected for primer designing. 842 SSR repeats were obtained from genomic sequences. 242 SSR repeats were obtained from EST sequences. 60 SSR repeats motifs were present in GSS sequences. All repeat motifs do not function as SSR markers and primer designing for all repeats is not possible since primer designing depends upon flanking sequences.

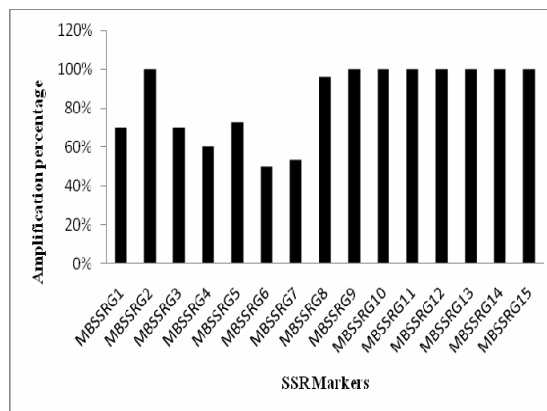


Fig. 1: Amplification percentage of different SSR markers produced from mungbean genotype

Thus, only selected repeats were taken to design primers. SSR primers were designed by Primer 3 (<http://frodo.wi.mit.edu>) software. 109 SSR primers were designed from genomic sequences, 110 SSR primers were designed from EST sequences and 25 SSR primers were designed from GSS sequences. SSR primers designed from genomic sequences, EST sequences and GSS sequences are respectively listed in table 1, 2 and 3. 15 primers from genomic sequences were checked on 24 mungbean and six urdbean accessions. Primers details given in table 4. Amplification percentage of 15 primers is given in fig.1. Allelic variation was obtained from primers for seven SSR namely MBSSRG1, MBSSRG2, MBSSRG10, MBSSRG11, MBSSRG12, MBSSRG13 and MBSSRG14. Amplification by MBSSRG10 given in fig. 2.

Table 1: SSR primers designed from genomic sequences

Gen bank no.	Primer sequences (5'-3')	Tm (°C)	GC%	motif	No. of repeats	Product size(bp)
gi 45331284 gb AY485988.1 -132	F:GGTGTTCGCTGTGGTTTT R:CATCGCTGAATCTACGACCA	61.00 59.82	50.00 50.00	caccga	2	327
gi 38045974 gb AY437639.1 -6	F:CAGCTTCTGTCTTGTCCCTT R:TTGACGAGGCAATAGCAGGT	60.19 60.80	45.45 50.00	ta	8	301
gi 2502086 gb AF022926.1 -69	F:GTGGGAAACCGGAATATCT R:ACAGGCAAGACCAGAGGAGA	60.02 59.99	50.00 55.00	tcaga	2	364
gi 1478369 gb S81594.1 -39	F:GGGACTGTAATCGGGTCACT R:GTCCTCACTTGGCCATCATC	60.00 60.48	55.00 55.00	gatga	2	355
gi 1184120 gb U20808.1 VRU20808-87	F:TGATGGTGATTGGCTGGAGA R:ATGCTGGAAGATCCAAAGTC	60.20 59.69	45.00 47.62	ctatttc	2	322
gi 1141783 gb U31211.1 VRU31211-12	F:GTTGAGGCTCAGCAACACCT R:CGACACACATGACACCTTGA	60.45 59.10	55.00 50.00	ac	5	347
gi 1006804 gb U34986.1 VRU34986-105	F:CATGAACGGGTTGAAGACCT R:CCAAATGGATAGAGTGTCTCGTC	59.97 58.58	50.00 45.45	tattac	2	333
gi 967124 gb U08140.1 VRU08140-125	F:GGCCTAGACAACCAGCAGTA R:TATAGTGGCCCTCTGGATG	60.10 59.91	55.00 55.00	gggaca	2	352
gi 951322 gb U31467.1 VRU31467-127	F:ATTTCCGAAGGACAACCTC R:CCTCCCAACACCTTCTTCT	60.58 60.33	50.00 50.00	taaac	2	304
gi 849135 gb U26709.1 VRU26709-119	F:GTTTCTCGATCGGATCTTC R:AGGGCTGTGTGTCGGTAAAC	59.78 60.04	50.00 50.00	atggc	2	306
gi 506851 gb L20507.1 VIRCALMODU-36	F:TCGATCGAAGAACTCGAAC R:AATACCCGGAATGCCTCTTT	58.02 59.80	45.00 45.00	aagaa	2	344
gi 506849 gb L20691.1 VIRCALMOD-40	F:CAACTGAGGAGAGTGGCAG R:GTCCTCACTTGGCCATCATC	59.77 60.48	55.00 55.00	gatga	2	324
gi 458337 gb U06046.1 VRU06046-75	F:CTGGGGTTCTTGGAGTTGG R:GGTACCCTTTTCCAGTCCA	59.56 58.99	50.00 55.00	tcagt	2	338
gi 295447 gb L07843.1 VIRNADPHP4-153	F:TAGCCCTCTCTCTCTCTCT R:TTCTCTTCTCTCTCCATCA	59.53 59.73	60.00 50.00	caacta	2	390
gi 169324 gb L07634.1 PHVC4HYDRO-117	F:ACCGCAACCTCACTCAACTC R:TCTTCTGACGTCGCCAC	60.31 59.81	55.00 57.89	cccga	2	327
gi 189169789 gb EU239689.2 -100	F:GGAATGGCACTATCAATGG R:CCAAACACAATGCTCTCAG	60.16 60.00	50.00 50.00	gtggg	2	314
gi 9587210 gb AF279252.1 -118	F:CCCTGGAGATGGCAGAGTAA R:TTGATCTACGCTGAGCTTCC	60.21 58.20	55.00 50.00	agaca	2	315
gi 9587204 gb AF279249.1 -45	F:TCAAGGCTGGTCTCAGAT R:CAGTGACAATGGCTGAAGC	59.80 60.30	50.00 50.00	ggtga	2	313
gi 8954297 gb AF139470.2 -52	F:TGAACAAGGGTACCAGGAG R:CGTGGCTACATAGAGTACTGA	59.96 58.49	55.00 47.83	caaatt	2	355
gi 8954296 gb AF139469.2 -45	F:TCTCTCTCCAGTGTACGA R:GCGTCTTATGGCTCAACTC	60.14 59.84	52.38 55.00	gtcccg	2	304
gi 8954294 gb AF139468.2 -38	F:TCCCACTAATCTCAAGC R:CTTCGCGTAGTGTGCAACC	59.89 60.83	50.00 55.00	aca	5	367
gi 8954288 gb AF139464.2 -85	F:TGGTGTTCCTGCTCAGAC R:GCACAACCTAGCAAAAGGTTG	60.03 59.49	50.00 50.00	gcaaa	2	344
gi 7682676 gb AF229794.1 -114	F:GCAAGCAGCCTCTATGTTTC R:AGACCAACAGCCATTTGAGC	59.98 60.26	55.00 50.00	tgcaa	2	312
gi 6979535 gb AF195806.1 -95	F:GGTTTGGCTCTGTCTCTGC R:GCGTCTTATGGCTGAGGTTT	59.86 59.34	50.00 50.00	teccac	2	307
gi 5305365 gb AF071550.1 -405	F:AGAAGACTGTGGGAACAGTGG R:ACGGCCACCAGAATAGTCAC	59.21 60.00	52.38 55.00	tgtaaa	2	362
gi 9587206 gb AF279250.1 -43	F:CGTGGAGGGTACCAGTATTG R:CGGTGGTAGTTTCCCACTGT	60.24 59.88	55.00 55.00	aaatt	2	325
gi 8954291 gb AF139466.2 -61	F:CCAAGCACCACAACCTCTCA R:TCTGTCTGGTTCGGATGAT	59.87 60.47	50.00 50.00	ttcggg	2	386
gi 269980508 gb FJ857948.1 -37	F:CGTCTTCTGCTTCTCTCA R:GTCACTGAAGGCGGTGATT	60.95 60.12	55.00 50.00	ctt	4	358
gi 16930801 gb AF441854.1 -18	F:GCTTGGCAATCCTTGGTAGA R:AAAAGGTGCTAACCGCAGTG	60.21 60.30	50.00 50.00	actttt	2	303
gi 13682803 gb AF126871.2 -83	F:CAGGTTGTGAGTGATCCAAAGC R:AGGATTATCGAGAGTAGTCA	60.71 55.64	52.38 40.91	tcttg	3	326
gi 9587208 gb AF279251.1 -74	F:CCAAGCCTAACAATACTCAG R:AAGGATTATCGAGAGTAGTCA	57.37 55.64	45.00 40.91	tcttg	3	311
gi 7682679 gb AF229795.1 -115	F:TGAAGGGAGGTACGATCTGG R:TTGAGCCAGTTTGTGTAG	60.07 59.90	55.00 50.00	tgcaa	2	338
gi 7025484 gb AF229849.1 -53	F:GCTGCTGATTGATCCCTGT R:GCCAGAGAAGAATGGAATGC	60.23 59.78	50.00 50.00	tgaa	3	330
gi 158251952 gb EF990627.1 -90	F:CAACTCCGCAATATTTCACT R:AGAAGGAGGGTGTGGGTTT	57.70 59.83	45.00 50.00	aatac	2	327
gi 158251950 gb EF990626.1 -87	F:AACCCAACACCTCTCTTCT R:CCATGCTGCTGTGCTCTCT	59.83 59.58	50.00 55.00	aacgac	2	379
gi 162296029 gb EU288914.1 -21	F:CGTGACCATCGAGTCTTTGA R:GCTTAAACTCAGCGGGTAGC	59.83 59.14	50.00 55.00	tcagg	2	337
gi 90969278 gb DQ445950.1 -118	F:CCACGACTGATCCAGAAAGG R:CGTACCCCAAAATACCAAAA	60.65 59.83	55.00 45.00	ttctaa	2	367
gi 90968745 gb DQ445738.1 -28	F:CAAACCAATCCGACTCAGC R:GCGTTCAAAGACTCGATGGT	59.23 60.26	52.63 50.00	ggag	3	314
gi 7211426 gb AF156667.1 -133	F:CTAGTCCGAGCTGGTGGAG R:TCTCCGTAGCCTGTCTTTC	60.01 59.43	60.00 55.00	agaag	2	371
gi 6934187 gb AF143208.1 -83	F:GCAGCAACAAACATCTCAC R:GCCACACGAAGCTCATTGTA	59.30 59.87	50.00 50.00	tgga	2	327
gi 259019991 gb GQ893027.1 -446	F:TTCTACTCCACCCAGAAC R:CCTCGTGCACCAAGTCAAA	60.09 59.72	55.00 50.00	ta	12	302
gi 223886027 gb FJ591131.1 -6	F:CAGCTTCTGTTCTGTCTCCCT R:AGTTGACGAGGCAATAGCAG	60.19 58.13	45.45 50.00	ta	9	301
gi 251831253 gb GQ227550.1 -185	F:CTCAGGCAATGACGTTTC R:AGCTTCTGTGATCTGGTGTG	60.40 57.03	52.63 50.00	cccatt	2	391
gi 238915390 gb FJ883469.1 -23	F:CCCTTCTGTCAAGGATCCAA R:AAGGATGCGGTAAGGGTTC	60.19 60.32	50.00 50.00	ggcaag	2	346
gi 238915388 gb FJ883468.1 -26	F:CCCTTCTGTCAAGGATCCAA R:GGTGAAGGTTCAAAAGTCCA	60.19 59.94	50.00 50.00	ggcaag	2	338

Development of SSR silico methods

Table 2: SSR primers designed from EST sequences

Gen bank no.	Primer sequences(5'-3')	Tm(°C)	GC%	Motif	No. of repeats	Product size (bp)
gi 213645856 gb AM910789.1 AM910789-39	F:CCAAGGCCAACAGAGAGAAG R: CTCCTTACATCACGGACAA	59.98 59.68	55.00 50.00	tgict	2	308
gi 186877713 gb AM696683.1 AM696683-26	F:GACAGGAGCCAGCAAATGAT R: AAGGAAGGCTGCTTCCAGGAT	60.23 60.35	50.00 50.00	ccaaa	2	347
gi 186875963 gb AM696658.1 AM696658-17	F: GCACGTGTCAACAACCTTGG R: AGAGGCTTGCTGAGCCCTTGG	60.20 62.11	50.00 55.00	aaaat	2	348
gi 186835460 gb AM696644.1 AM696644-15	F: CCGTGGATTGGTTCCAGTAT R: TACTCGCCACGATGGTAAGG	59.67 61.04	50.00 55.00	Gccaaag	2	376
gi 186835453 gb AM696637.1 AM696637-22	F: GGCTGGTTTCTGAACTGGA R: ACATGGGATGAGCCAGAAGT	60.23 59.54	50.00 50.00	ttaat	2	301
gi 186834740 gb AM696633.1 AM696633-22	F: TGCCTACGCCTGGAGAGTAT R: CAGTCGAGACCCAGACACAA	59.86 60.02	55.00 55.00	aatcag	2	377
gi 186834002 gb AM696613.1 AM696613-19	F: TCAGAATGCGCTGGTAACAC R: TAGACCAGCTCGCACACAT	59.87 59.47	50.00 50.00	tgagg	2	323
gi 186833259 gb AM696592.1 AM696592-19	F: CCGTGAGGAAGTGAGGATA R: CCGCCATAAAGGATATGGACT	60.07 58.88	55.00 50.00	atgaga	2	305
gi 186830309 gb AM696538.1 AM696538-18	F: GATCTCAAGGGTCAGCCAAA R: TCCACCCACAATGAGAAACA	60.20 59.94	50.00 45.00	ctttg	2	347
gi 186830308 gb AM696537.1 AM696537-14	F: TGAACCAACCAAACTACCA R: CAAAAGGCATACAAGGAGACG	59.88 60.99	47.62 45.45	catce	2	243
gi 186830306 gb AM696535.1 AM696535-32	F: GGGTCAGGTGAGAGTCAAT R: GCGCCCAAAAATTTGAAAC	60.12 60.36	55.00 45.00	ttttac	2	361
gi 186830304 gb AM696533.1 AM696533-23	F: CTCAAGCCTTGATCAGATGG R: ATCATCTGGGTTGGGATCTG	59.39 59.74	50.00 50.00	gccct	2	367
gi 186795581 gb AM696516.1 AM696516-18	F: GGTTGCTTAATGCCACAGGA R: TATGCTTCCACGCTTTGAC	61.03 59.87	50.00 50.00	ctggtt	2	325
gi 186830308 gb AM696537.1 AM696537-14	F: CTGAACCAACCAAACTACCA R: CAAAAGGCATACAAGGAGACG	59.88 60.99	47.62 45.45	catce	2	243
gi 186830306 gb AM696535.1 AM696535-32	F: GGTGGTCATCACACCACAT R: CCCCCTCGACTCAATTTGT	59.08 59.91	50.00 52.63	ttttac	2	350
gi 186830304 gb AM696533.1 AM696533-23	F: CTCAAGCCTTGATCAGATGG R: ATCATCTGGGTTGGGATCTG	59.39 59.74	50.00 50.00	gccct	2	367
gi 186795581 gb AM696516.1 AM696516-18	F: GGTTGCTTAATGCCACAGGA R: GGGTACCCCTTGTGTTAGGG	61.03 59.62	50.00 52.38	ctggtt	2	209
gi 186794691 gb AM696508.1 AM696508-22	F: CTCTAATGGACACAGAGCAGA R: GGATCTGGAATGGGGAAAG	59.50 60.63	50.00 50.00	accaca	2	311
gi 186793793 gb AM696491.1 AM696491-15	F: AAACCTGCATGACCACACT R: GCTTAGGCACTTGAGGATGG	60.43 59.84	50.00 55.00	ttgctg	2	228
gi 186793789 gb AM696487.1 AM696487-9	F: TCACCAGCAGAGAGGGTTT R: GCCAGTTGAACAGGTTGCTT	59.84 60.30	50.00 50.00	accaa	2	215
gi 186791996 gb AM696457.1 AM696457-18	F: GCCATTAATCCCATGTCTTA R: GCCTGAAAACCTAGAGAATATACAAGA	59.76 59.66	45.00 37.04	ggatg	2	304
gi 186791110 gb AM696453.1 AM696453-23	F: CACAGGGAGAGTGATGCTGA R: CCAATGGAAGTTGCACCAG	59.98 60.10	55.00 52.63	agtga	2	323
gi 186789281 gb AM696419.1 AM696419-17	F: CTCCCTGTAGTCTAGATTTC R: CACCAAAGACAAAGCGTTCC	59.33 60.67	50.00 50.00	Aagaga	2	334
gi 186789273 gb AM696411.1 AM696411-29	F: TGGCACAGTCACTGTTTCT R: CGCTGCTATGAAAGGAGCTT	59.62 59.75	50.00 50.00	gaaca	2	391
gi 186729655 gb AM696395.1 AM696395-12	F: GCTAAATGCGGCTTCTACC R: GGCTATTCTCAACCTGTTTGC	58.99 62.17	50.00 50.00	aagag	2	303
gi 186728696 gb AM696364.1 AM696364-38	F: TGGTTGACCCGACGATAGT R: TGTGCTGCGTGACCTTAGTT	60.28 59.51	52.63 50.00	tcctgc	2	343
gi 186727742 gb AM696345.1 AM696345-25	F: CCTACACGCACCAAGACCTT R: TCTGATCTCTGGCCTGTCT	60.17 60.25	55.00 55.00	atgagga	2	307
gi 186727249 gb AM696322.1 AM696322-22	F: GTGGGTCAGAAACCAAGAG R: CAGCCTTTGCCACCAAGATT	59.55 60.13	55.00 50.00	cagag	2	310
gi 186727247 gb AM696320.1 AM696320-22	F: GGGCCAGTGACAAATGAGAG R: CACGACAGTTCACCAAGCAT	60.66 59.75	55.00 50.00	aga	6	342
gi 186726319 gb AM696315.1 AM696315-9	F: CTTGACCCCTCAAGCTATT R: GAGGACAAACCAAGCTGAAC	59.34 59.70	50.00 55.00	ca	5	313
gi 186726315 gb AM696311.1 AM696311-24	F: CGCTCTGGTTGCTATGTCA R: GAGTGGTGTGATGGCAAATG	60.01 59.97	50.00 50.00	tttcc	2	311
gi 183206217 gb AM696051.1 AM696051-29	F: AAGTGGTAGGACCTTGGTGA R: TTGGAATTTCTCCCTGTCT	59.42 59.36	55.00 50.00	gtatg	2	357
gi 183206214 gb AM696048.1 AM696048-42	F: GGGCAAAGAAGAGGATCTGA R: CCAAGGGTAGAATGGGACAA	59.36 59.78	50.00 50.00	aaagga	2	397
gi 183206213 gb AM696047.1 AM696047-35	F: TAGGTGGTTGGGTTGGAGAG R: TTCAGAGGTTCCGACTTTGG	59.96 60.22	55.00 50.00	gaaaa	2	304
gi 183206210 gb AM696044.1 AM696044-49	F: CAGAAAGGGCTTCGCATAAG R: CGAGATGTCCTTCCCACACT	59.97 60.11	50.00 55.00	gatgtg	2	325
gi 183206208 gb AM696042.1 AM696042-34	F: AGGATCAGGTTGAGCATGT R: GCTACATGCAGTGGCAAGAA	59.54 60.02	50.00 50.00	acttic	2	394
gi 183206206 gb AM696040.1 AM696040-37	F: CTCTGTACTGCATCGGTTGG R: TTCTCACACCGAGGCTCTCT	59.31 59.83	55.00 55.00	ttggg	2	352
gi 183206205 gb AM696039.1 AM696039-33	F: TCATCAATCTGCGTCTGACC R: AGAACCAGCAAACCCAGGAT	59.79 60.88	50.00 50.00	agaatc	2	317
gi 183206202 gb AM696036.1 AM696036-28	F: GAGGCAACATCACCTCCTA R: TCATGGACCCACCACTGAAT	60.07 61.21	55.00 50.00	gggtg	2	308
gi 183206201 gb AM696035.1 AM696035-26	F: CTGAAGGGTAGCCAGCAAAG R: CAGCTACTGCGATTTCCAGT	60.01 59.55	50.00	gcttt	2	321
gi 183206199 gb AM696033.1 AM696033-32	F: TCCCAATGGTTCCGGTTA R: TCTGGATTACTGGCCCTTGA	59.70 60.59	50.00	cctttt	2	323
gi 183206198 gb AM696032.1 AM696032-40	F: CACCCCTGTCCCTAAGAA R: CTCTTCCCTCCACCACT	59.90 60.48	57.89 55.00	gatgaa	2	370
gi 183206197 gb AM696031.1 AM696031-45	F: GCTGCACAGGATGCTGA R: CCGAAAGCTATTCAGTCCA	60.17 60.21	55.00 50.00	attgt	2	332
gi 183206195 gb AM696029.1 AM696029-32	F: ATCCACCGTTACTGAGCAT R: TCACACTGAAGCATCAC	60.69 60.91	50.00 50.00	catcaa	2	376

Table 3: SSR primers designed from genomic survey sequences

Gen bank no.	Primer sequences(5'-3')	Tm (°C)	GC%	Motif	No. of repeats	Product size (bp)
gi 257367024 gb GS377372.1 GS377372-23	F: AGCTTGCGCTAATCATGGTC R: ACCAGAAAGCAAGCCGATCT	60.10 61.29	50.00 50.00	ttgcg	2	308
gi 166709893 gb ET203890.1 ET203890-28	F: GTCCTCGGAATGCATCTA R: TACGAACACTTTCCGCACTG	59.92 59.90	52.63 50.00	gggtt	2	400
gi 149939382 gb ER896028.1 ER896028-27	F: TGATTCGAGCTCGGTACCTC R: CGATTCAAACCTCGGTGAG	60.36 60.25	55.00 52.63	aaaat	2	543
gi 149939381 gb ER896027.1 ER896027-41	F: GTCCTCGGAATGCATCTA R: GTTCTTTGCGCGAGAGATT	59.92 59.76	52.63 50.00	aataaat	2	307
gi 149939380 gb ER896026.1 ER896026-39	F: AATAAAGGGGGACCATGC R: TGGGGAGATAAATCTGACTGG	60.94 60.49	50.00 50.00	aacct	2	381
gi 149939378 gb ER896024.1 ER896024-29	F: ATAATGGGGACCATGC R: GGGGATAAATGGGAGAATAGG	60.42 61.82	52.63 50.00	aacct	2	350
gi 144925907 gb EI522402.1 EI522402-29	F: TAACCCAGCCTAGGTGATT R: GAGGCAGCTAGCAAATGGAG	59.59 60.12	50.00 55.00	cattt	2	381
gi 149939378 gb ER896024.1 ER896024-29	F: ATAATGGGGACCATGC R: GGGGATAAATGGGAGAATAGG	60.42 61.82	52.63 50.00	aacct	2	350
gi 144925907 gb EI522402.1 EI522402-30	F: TAACCCAGCCTAGGTGATT R: GAGGCAGCTAGCAAATGGAG	59.59 60.12	50.00 55.00	ttgtg	2	381
gi 8602614 gb AZ254294.1 AZ254294-26	F: TGTAACTTGGCACAACGAG R: CTGTACAGGGGTGTTAGCTTC	59.76 57.95	50.00 50.00	agttt	2	319
gi 8602604 gb AZ254289.1 AZ254289-23	F: TGAGGGATCCAAGTCTTTGC R: CACTGGTCTCCCAATAA	60.20 60.84	50.00 52.63	agaacc	2	303
gi 8602600 gb AZ254287.1 AZ254287-37	F: CGCTATACTAGCTCCCAAT R: GCTGGCACAAGGGTTACTA	60.61 60.13	52.38 55.00	tgcaa	2	312
gi 8602580 gb AZ254277.1 AZ254277-29	F: AGTGGAGCAGGCTAAATGA R: AGAGTGCTCCAGCAAGCAAT	59.84 60.16	50.00 50.00	cattt	2	351
gi 8602569 gb AZ254272.1 AZ254272-27	F: CTGGAGAACAAGACGGTGGT R: CACCTGCCACTACAGAGAGC	60.15 58.62	55.00 60.00	tgtcga	2	325
gi 8602559 gb AZ254267.1 AZ254267-22	F: CTTGATCAAAGTGCCTGCAA R: GCCGGAGTTTGTAGTCAAT	59.99 60.12	45.00 50.00	aacct	2	331
gi 8602535 gb AZ254255.1 AZ254255-27	F: GGTGTCATTCAAGGGCATCT R: TCGATTCTCTTTGACCAC	59.93 60.05	50.00 50.00	aagaa	2	368
gi 8602533 gb AZ254254.1 AZ254254-25	F: GCCAAGGTGCCAGATATAG R: GGCATGTAGCAGAAACATTC	60.62 60.75	55.00 50.00	ttctg	2	354
gi 8602527 gb AZ254251.1 AZ254251-30	F: TCCTCTCTTCACTCGTTG R: AACACAGGCTACAGCTCAACC	60.38 59.42	55.00 52.38	tgcaa	2	398
gi 8602510 gb AZ254243.1 AZ254243-9	F: ATGAGCAAGGGGCAAGTATG R: TTCCCAACAGCTCAGTGTGT	60.10 59.31	50.00 50.00	tcaag	2	172
gi 8602504 gb AZ254240.1 AZ254240-18	F: GAGCGTAGGCTTGCTTTGAG R: CACGGGGAGGTAGTGACAAT	60.29 59.84	55.00 55.00	Accea	2	333
gi 8602502 gb AZ254239.1 AZ254239-25	F: CCAGTGTGGTGAATTTCTGA R: CCTCCAATGGATCCTCGTTA	59.52 59.89	50.00 50.00	ggtgacg	2	328
gi 8602497 gb AZ254237.1 AZ254237-29	F: TTGCCCTATCACCTTTTAC R: GTAGACCCGGTTCCGAAT	59.93 61.09	50.00 57.89	tacag	2	365
gi 8602493 gb AZ254235.1 AZ254235-30	F: GTGCCCAACACACTTCTTT R: CTTGCCGTACAACCTTTGA	60.01 58.92	50.00 50.00	actga	2	304
gi 8602488 gb AZ254233.1 AZ254233-20	F: GCACCACAATGCATCAACAC R: GAAGCCTGTAGACCTTGACTC	59.39 61.03	54.55 50.00	tgtcag	2	451
gi 8602484 gb AZ254231.1 AZ254231-26	F: GGTGTTCTTTGTGACGTGGA R: AGCGTAATAAAGCGCCACAG	59.57 60.42	50.00 50.00	gccct	2	396

Table 4: Primers checked on mungbean and urdbean accessions

Marker	Gene bank no.	Primer sequences(5'-3')	Repeat motif	Product size (bp)	Tm(°C)	GC%
MBSSRG1	HQ148143.1	F:AATTGCAGAATCCCCTGTAAC R: AAGAGCGTCTTTGCTGTTT	(CGG) ₄	308	58.4	45
MBSSRG2	HQ148143.1	F: GTCGATGACCCAAATCCAAT R: TGCGTTCAAAGACTCGATG	(TCCTC) ₂	330	58.4	45
MBSSRG3	AY900122.1	F: ATCTGACGAGAGCATGTGGA R: CTCCCCTTAGCCACAATCA	(TTGGTG) ₂	325	58.4	50
MBSSRG4	AY900122.1	F: GAAGCCGATTCGTACTGACA R: TACAACCGAAGACACGCAAG	(GAACA) ₂	326	58.4	50
MBSSRG5	AY683030.1	F: TGATGTGTTCTCCCGATT R: AACAAGTACCCGTTGCCAAG	(TATTC) ₂	307	58.4	50
MBSSRG6	AY233257.1	F: ACCTTCAGGCTTCAACAACG R: CGACGTAGAAACACACGATCA	(TGA) ₄	209	58.4	48
MBSSRG7	HQ148143.1	F: GTCGATGACCCAAATCCAAT R: TTGCGTTCAAAGACTCGATG	(ACGAA) ₂	330	58.4	45
MBSSRG8	HQ148144.1	F: AATTGCAGAATCCCCTGTAAC R: AAGAGCGTCTTTGCTGTTT	(CGG) ₄	308	58.4	45
MBSSRG9	HQ148144.1	F: CGTAATGCGTCCATACCACA R: CCGATGCTTTTTTCATGGT	(CTCCT) ₂	383	59.4	47
MBSSRG10	HQ148144.1	F: CGCTCTCTCTCTCTCTCAG R: CCGATGCTTTTTTCATGGT	(ACGAA) ₂	312	61.4	54.1
MBSSRG11	HQ148144.1	F: AATTGCAGAATCCCCTGTAAC R: AAGAGCGTCTTTGCTGTTT	(CAATC) ₂	308	58.4	45
MBSSRG12	HQ148145.1	F: TTGCAGAAATCCTGTGAACCA R: AAGAGCGTCTTTGCTGTTT	(CGG) ₄	306	58.4	45
MBSSRG13	HQ148145.1	F: ATCATTGTCGATGCCCAAAC R: AGGATTCTGCAATTCACACCA	(CTCCT) ₂	301	58.4	45
MBSSRG14	HQ148145.1	F: TTGCAGAAATCCTGTGAACCA R: AAGAGCGTCTTTGCTGTTT	(CAATC) ₂	306	58.4	45
MBSSRG15	HQ148145.1	F: ATCATTGTCGATGCCCAAAC R: TTGCGTTCAAAGACTCGATG	(GGAGGG) ₂	327	58.4	45

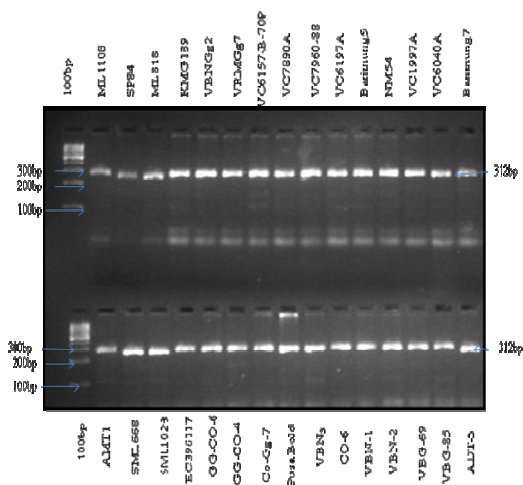


Fig. 2: Amplification by SSR primer MBSSRG10

Hence from this study, it is evident that development of SSR markers using database searching is more cost effective and cheap in compare to the isolation of the same from genomic libraries and cross- species amplification. Bioinformatics approach produces good and more informative microsatellite markers in a very short span of time. There is a plenty number of crops which are playing very important role to meet our food security but genetic study on the development of SSR marker is lagging in such crops. However, using database searching and bioinformatics methods we can obtain nucleotide sequence of information which can be utilized to carry out genetic study on such crops. Hence, these *in silico* methods are playing very important role in contributing to the development and progress in the field of science and agriculture.

Kalendar, R., Lee, D. and Schulman. A. H. 2011. Java web tools for PCR, *in silico* PCR, and oligonucleotide assembly and analysis. *Genomics*, **2**: 98.

Kalia, R. K., Rai, M. K., Kalia, S., Singh, R. and Dhawan, A. K. 2011. Microsatellite markers: an overview of the recent progress in plants. *Euphytica*, **177**:309–34.

Karuppanapandian, T., Karuppururai, T., Sinha, T. P. M., Hamarul Haniya, A. and Manoharan, K. 2006. Genetic diversity in green gram [*Vigna radiata* (L.)] landraces analyzed by using random amplified polymorphic DNA (RAPD). *African J. Biotech.*, **5**: 1214 - 19.

Khattak, A. B., Bibi, N. and Aurangzeb. 2007. Quality assessment and consumers acceptability studies of newly evolved mung bean genotypes (*Vigna radiata* L.). *American J. Food Tech.*, **2**:536-42.

Mann, T., Humbert, R., Dorschner, M. and Stamatoyannopoulos, J. 2009. A thermodynamic approach to PCR primer design. *Nucleic Acids Res.*, **37**: 95.

Rishi, N. 2009. Significant plant virus diseases in India and a glimpse of modern disease management technology. *J. Gen. Pl. Path.*, **75**: 1–18.

Toth, G., Gaspari, Z. and Jurka, J. 2000. Microsatellites in different eukaryotic genomes: survey and analysis. *Genome Res.*, **10**:967-81.

REFERENCES

.